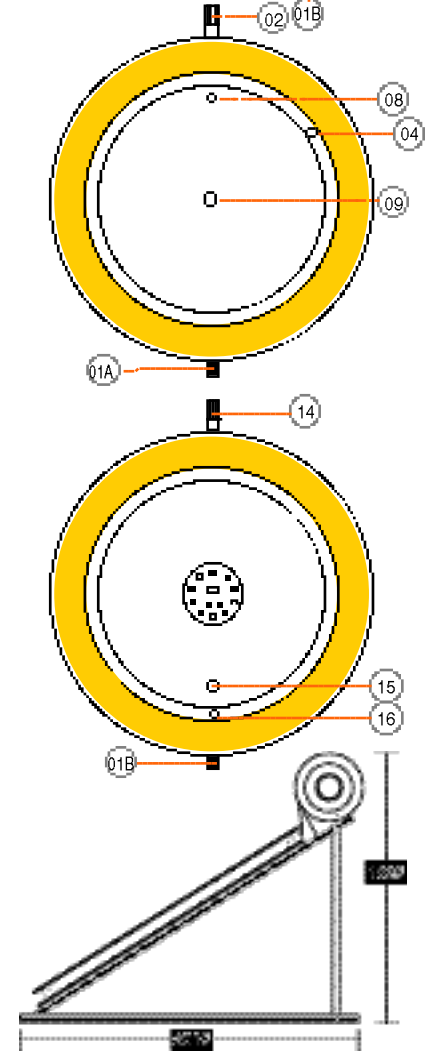
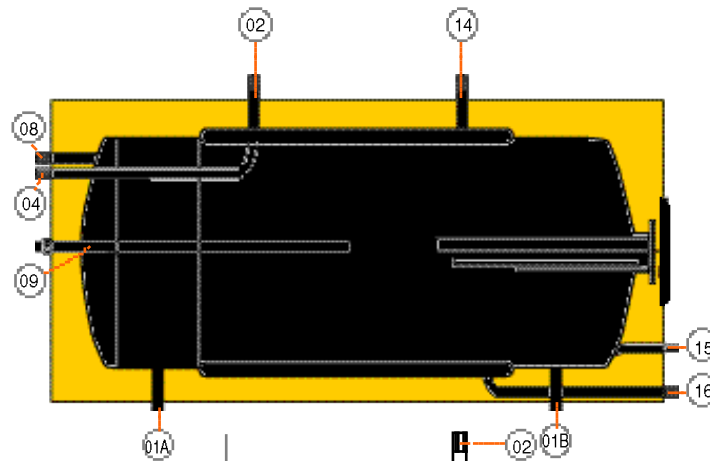
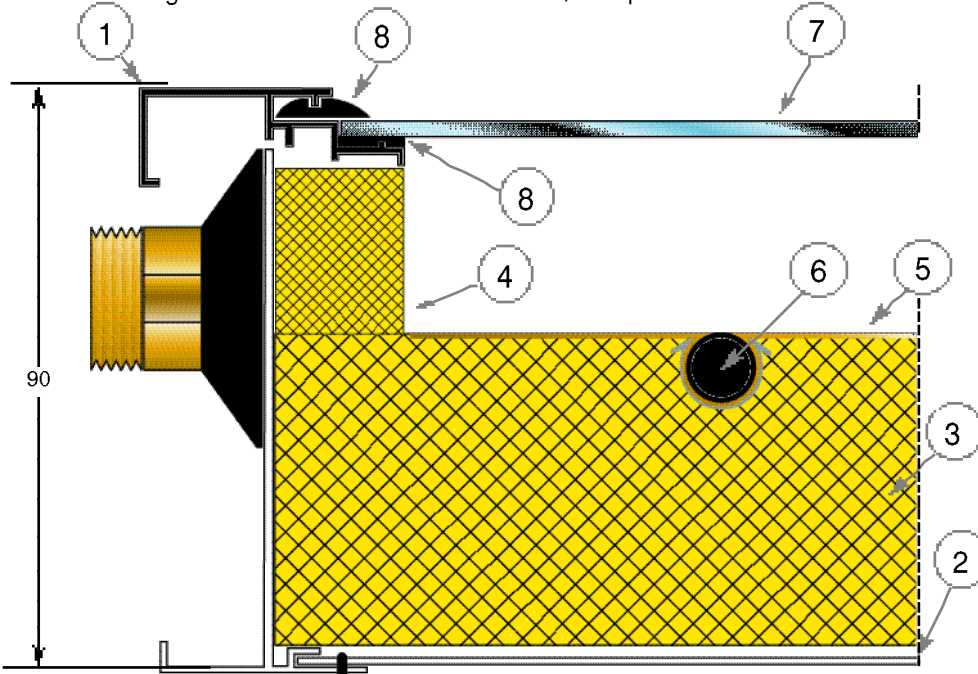


TECHNICAL SPECIFICATIONS OF THE STORAGE TANK

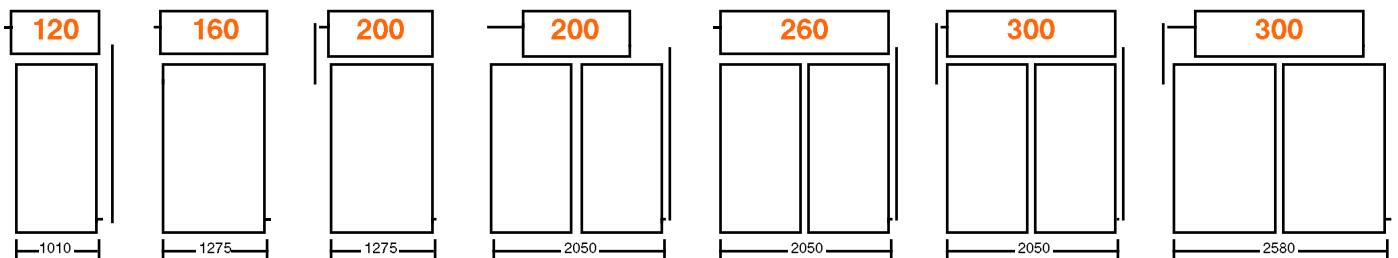
- External casing : anodized aluminium
- Tank's insulation : polyurethane foam 40-55 mm
- Cylinder's material : galvanized sheeting 3mm
- Jacket's material : low carbon steel 1,5 mm
- Cylinder's internal Protection : durosalt 80-120 microns
- Additional protection : magnesium rod
- Test pressure : 2080 kPa (298psi)
- Electric resistance : copper
- Thermostat : bipolar of four contacts
- Power rate : available from 0,8kw – 4kw

TECHNICAL SPECIFICATIONS OF THE COLLECTOR

1. External frame : anodized aluminium profile
2. Back side : galvanized sheeting - 0,6 mm
3. Back insulation : rock wool 40 mm
4. Side insulation : fiberglass of 20 mm
5. Absorber : copper fins 0,2 mm (selective or black paint)
6. Absorber's tubes : copper pipes \varnothing 10 & \varnothing 22 (risers and headers)
7. Cover : solar tempered glass
8. Water-tightness : EPDM rubber/transparent silicone



EXTERNAL DIMENSIONS - ALL MODELS



EXTERNAL DIMENSIONS - ALL MODELS

MEGASUN MODEL	STORAGE TANK			COLLECTOR					SUPPORT BASE Weight kg	TOTAL WEIGHT kg	
	Dimensions mm	Weight kg	Cylinder's Pressure Test	Dimensions mm	Collectors	Surface m ²	Weight kg (per collector)	Pressure Test		EMPTY	FULL
120	530x1100	52	2080 kPa (298 psi)	2050x1010x90	1	2,10	43	2080 kPa(298 psi)	26	121	231
160	530x1320	62	2080 kPa (298 psi)	2050x1275x90	1	2,60	51	2080 kPa(298 psi)	27	140	290
200	570x1320	70	2080 kPa (298 psi)	2050x1275x90	1	2,60	51	2080 kPa(298 psi)	27	148	338
200	570x1320	70	2080 kPa (298 psi)	2050x1010x90	2	4,20	43	2080 kPa(298 psi)	28	184	376
260	530x2050	103	2080 kPa (298 psi)	2050x1010x90	2	4,20	43	2080 kPa(298 psi)	30	219	469
300	570x2050	114	2080 kPa (298 psi)	2050x1010x90	2	4,20	43	2080 kPa(298 psi)	30	230	520
300	570x2050	114	2080 kPa (298 psi)	2050x1275x90	2	5,20	51	2080 kPa(298 psi)	30	246	536

note: The company reserves the right to change the specifications, without prior notification.